

# WTBN RANGE 1

## SOP

### RANGE DESCRIPTION

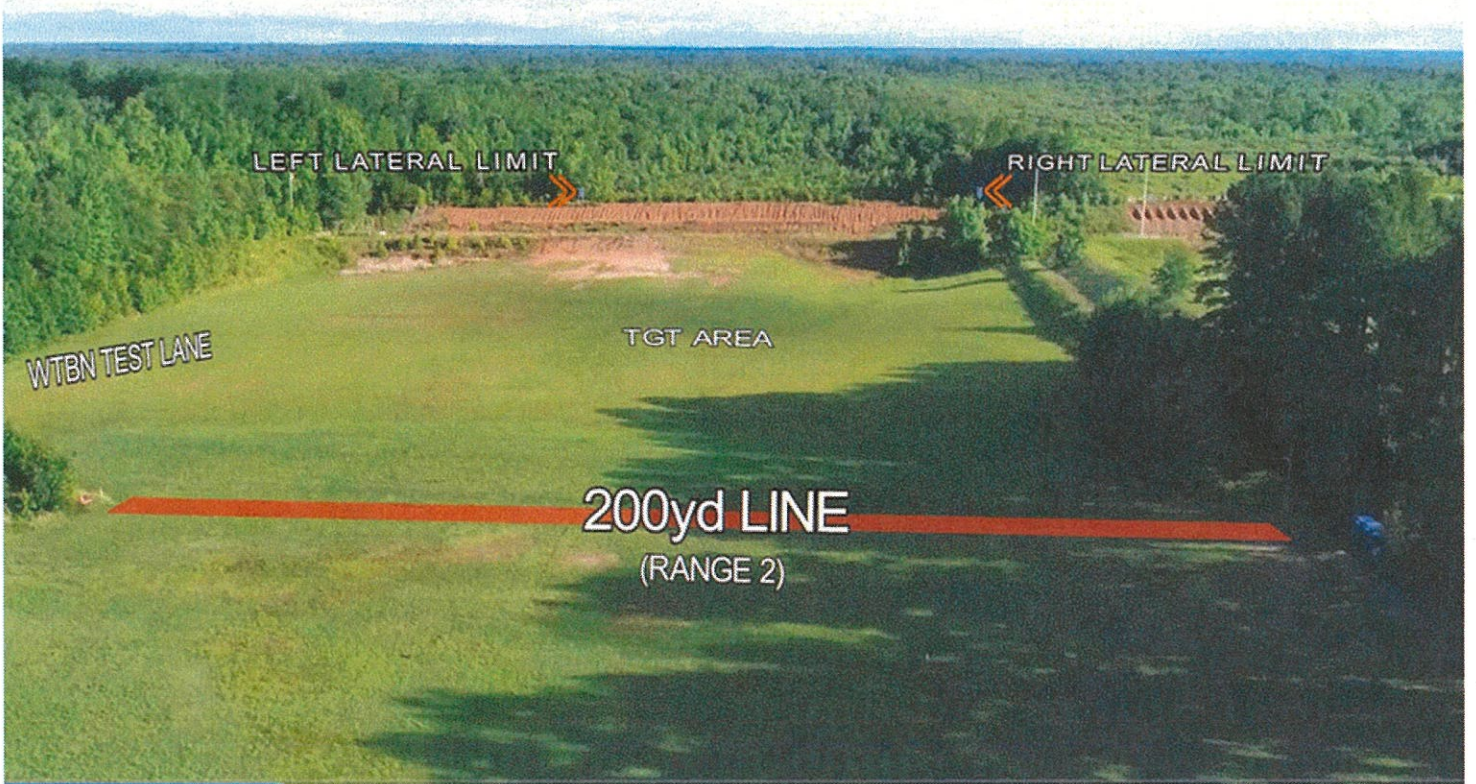
Range 1 is an active, small arms, live-fire range located at Grid 87376760. It is accessible from MCB-4. It is a rectangular range with a ballistic wall separating it from the Test Shed and tree lined berm separating it from Range 2.

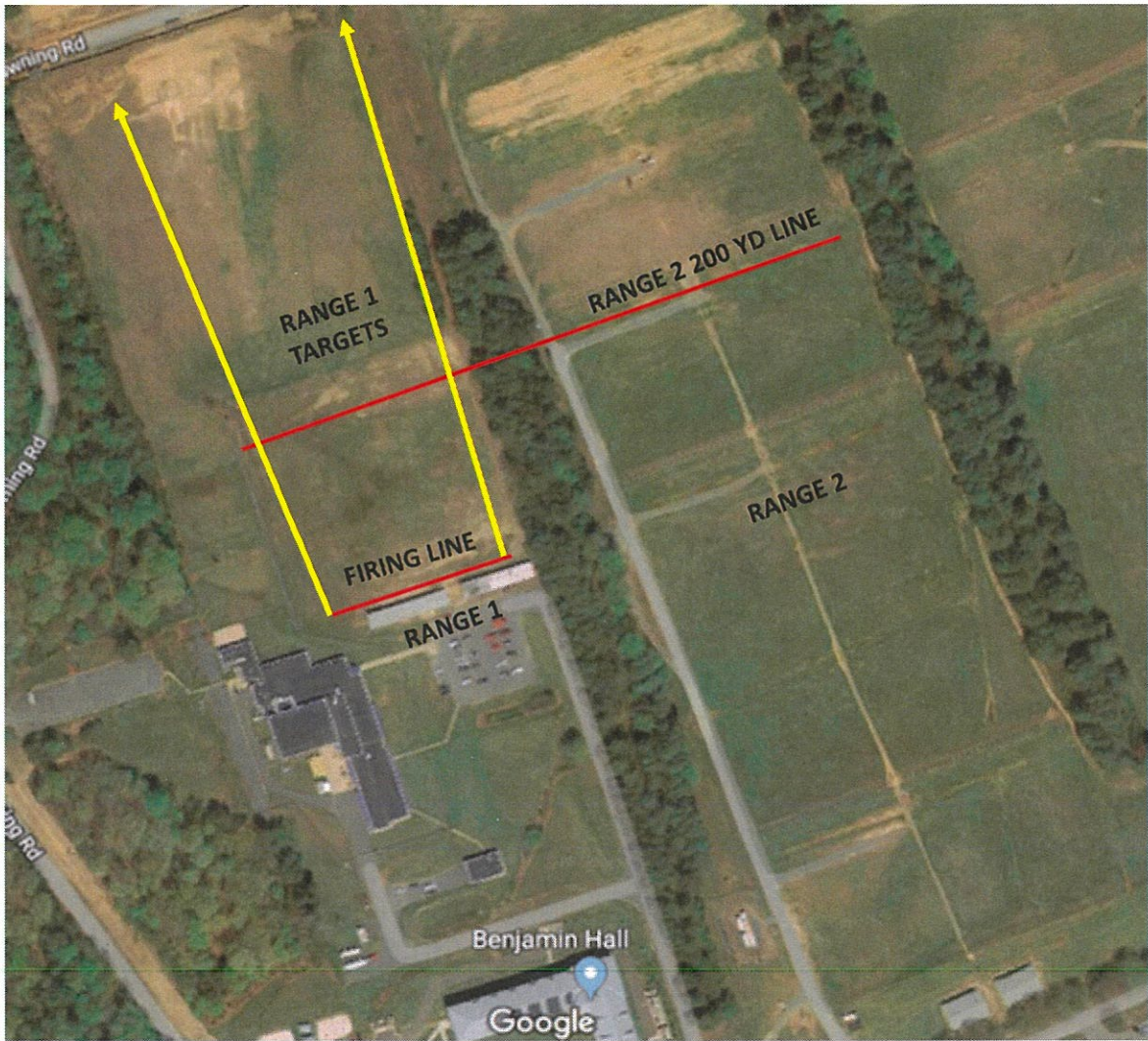
Primary Use: Individual small arms familiarization, qualification and short range (7-100 meters) shooting.

Alternate Uses: Foreign Weapons Live Fire, Rec Fire

**DOWN RANGE MOVEMENT INTO THE IMPACT AREA (BEYOND THE IMPACT BERM) IS PROHIBITED**







GENERAL RANGE INFORMATION:

Number of Firing Points: Multiple. The number of weapons that can be fired from the firing line at once will depend on the type of weapon system, its size and the space needed to safely operate it.

WEAPONS AUTHORIZED:

- Service Rifles
- Sniper, competition and special application rifles up to .50 cal (Ball)
- Service shotguns
- Service pistols
- USMC-Approved Foreign Weapons
- Pyrotechnics and illumination are authorized when fire conditions allow
- Hand Grenades (Illum/Practice/Smoke)
- Light and medium machine guns
- Hand-held grenade launchers
- Approved R & D weapons
- Approved automatic rifles

AMMUNITION AUTHORIZED: \*\*\*NO ARMOR-PIERCING AMMUNITION ALLOWED\*\*\*

- Pistol (All)
- Shotgun (All)
- 5.56mm/.223 Ball and linked
- 7.62mm Ball and linked
- 7.62mm X 51mm / .308 Special Ball
- .300 Winchester Magnum Ball
- .50 Cal Ball (Rec fire)
- 40mm (illumination, ground smoke and TP)
- Hand Grenades (Illum/Practice/Smoke)
- USMC-Approved foreign weapons ammunition
- Approved sniper competition and special application rifle ammunition up to .50 cal ball (6,500m SDZ)

TARGETS/SIMULATORS/DEVICES.

- Targets on Range 1 will be placed either on line or at varying distances.
- Targets will be placed to ensure projectiles do not impact the protective berm and all impacts land between targets 1 and 50.
- Special attention must be given to ensure that NO shooters on Range 2 or the Rifle Test Facility Range are forward of ANY target on Range 1.
- Targets are limited to paper, wood and plastic and approved ballistic steel.
- Ballistic steel targets must be a minimum of 3/8" and constructed of AR-500 or greater steel.
- Steel targets will not be engaged closer than 100m with 5.56mm or 7.62mm for targets provided by unit.
- No EPR ammunition will be fired on steel targets.
- Contact Training Support Center (TSC) at (703)432-7026/7969 for targetry support or questions.

Minimum engagement distances for portable ballistic steel targets:

- Pistol: 7 meters
- Shotgun (buck/bird): 10 meters
- Shotgun (slug): 50 meters
- 5.56mm/.223 Ball/link: 150 meters for TSC targets  
100 meters for unit-owned targets
- 7.62mm Ball/linked: 150 meters for TSC targets  
100 meters for unit-owned targets
- 7.62mm Special Ball: 150 meters
- .300 WinMag 300 meters

-Approved foreign weapons ammunition

- Pistol: 7 meters
- 5.45mm: 150 meters for TSC targets  
100 meters for unit-owned targets
- 7.62mm Ball and linked: 150 meters for TSC targets  
100 meters for unit-owned targets
- 7.62mm x 54R: 150 meters for TSC targets  
100 meters for unit-owned targets

PRIMARY DIRECTION OF FIRE. North-Northwest

RANGE USE RESTRICTIONS/COMMENTS.

1. Using unit will check-in with WTBn S-3 and receive range brief and radios prior to occupying the range.
2. Red range flag is placed on the pole next to the range house. Red flashing light will be used for night firing.
3. The only weapons and ammunition approved for use on this range are listed in this SOP. There shall be no deviations from or modification to the approved weapons and ammunition.
4. For WTBN units/sections: The OIC and RSO will be physically present on the range at all times during live fire training and events. For multiple ranges/events in one unit/section, only one OIC is required, but must be physically located on one of the ranges (SAT Range excluded).
5. For external units: The OIC and RSO will be physically present on each range at all times during live fire training and events. For multiple ranges/events with external units, an OIC and RSO is required for each range, and must be physically located on each of those ranges.
6. The Officer-in-Charge (OIC) shall be the rank of Staff Sergeant or above and will be certified in accordance with MCB Range Regulations. The Range Safety Officer (RSO) shall be the rank of Sergeant or above and will be qualified in accordance with MCB Range Regulations.

7. Movement forward of the adjacent 200 yard line (Range 2) must be coordinated with WTBn S-3 via radio communication.

8. Fire and Movement or Fire and Maneuver are not authorized. The only exception is firing on the move to support the execution of the Marine Corps Combat Marksmanship Program (MCCMP) Tables 2-6 short range engagements.

Firing on the move will only be conducted in the following manner:

-Movement will be restricted to walking straight forward, to the rear and simple button-hook techniques. (No fire team/individual rushes)

-There will be no more than two shooters per instructor/safety supervisor moving at a time. (Example: 7 shooters = 4 instructor/safety supervisors).

-There will be at least one target width separation between shooters.

-Targets will be no farther than 50m.

-Targets will be constructed from paper, plastic, wood or ballistic steel.

-Shooters will not fire at multiple targets closer than 15 meters.

-Steel targets will not be engaged closer than 100m with 5.56mm or 7.62mm for targets provided by unit.

-Multiple targets will not be farther apart than one meter.

-Semi-Automatic firing only as prescribed in MCCMP Tables 2-6.

9. There will be no personnel on adjacent ranges forward of the targets on Range 1. This must be coordinated through the adjacent range OIC and WTBn S-3 via radio communication.

10. Adjacent ranges present hazards when firing. Personnel will not occupy any portion of the SDZs unless they are protected by artificial barriers. Any personnel located in the pits will remain on the catwalk while firing takes place.

11. Strict inter-range and intra-range coordination and communication will be exercised to ensure personnel are not exposed to direct weapons fire or ricochet hazards.

12. Firing may be conducted from under the overhead protection of the sheds. Muzzles of all weapons must be forward of the concrete foundation when doing so. Double ear protection is required.

13. Recreational firing (Rec fire) is conducted on Range 1 routinely. When this occurs, there will be no ammunition fired that has a max range (Distance X) of more than 6500 meters.

14. Units that have requested contractor support (i.e., automated targets, PITS targets, battlefield effects simulators, etc.) that are not present on the specified range within 1 hour of the requested time and have not contacted RMB/TSCQ will forfeit all contracted support for the day.

15. Units that have occupied a range with approved contractor support (i.e., automated targets, PITS targets, battlefield effects simulators, etc.) and that have not begun to use that support within 2 hours of the requested hour of operation will forfeit all contracted support for the day.

16. Units that are training with contractor support (i.e., automated targets, PITS targets, battlefield effects simulators, etc.) that place themselves voluntary into check fire for 2 hours during the approved support operational hours will forfeit all support for the day.

NOTE: Units that encounter situations where contractor support (i.e., automated targets, PITS targets, battlefield effects simulators, etc.) is delayed or interrupted by circumstances beyond the control of the requesting unit (i.e., RMB directed check fire, ASP support, MEDEVAC, etc.) must contact RMB/TSCQ in order to arrange continued support within the scope of the contract and available assets.

17. If battle effect simulators are to be used on this range, the OIC and RSO will be trained on the systems in addition to the operator.

APPLICABLE MAP SHEET. All grid coordinates listed in this order apply to the Quantico Military Installation Map V834S Edition 5-NGA 1:25,000.

FACILITIES

Towers: 0  
Bleachers: 0  
Sheds: 1  
Ammo Breakdown table: 1 (kept in the shed when not being used)  
Parking: None

UTILITIES AVAILABLE

Electricity: None  
Lights: None  
Water System: None

INSTALLED COMMUNICATIONS. None

<u>Nearest MEDEVAC Landing</u>	<u>MILES</u>	<u>LOCATION</u>
<u>Zones (LZ)</u>	.3	8820067600 (Range 4)
LZ-9		

Directions: Exit Range 1, turn left. Go approx 500m to Range 4. LZ located between Garand Road and 700 yd line on right.

LASERS AUTHORIZED. Class 1-3A. Standard aiming devices mounted on approved service rifles. Class 3B can be fired if safety filter is on, reducing power output.

COMMUNICATION REQUIREMENTS:

1. A radio check is required immediately upon occupying any portion of the RTA, every 30 minutes in a live fire status and every 3 hours in a non-live fire status.
2. The Range Control Facility (RCF) Fire Desk Net Control call sign is "Range Control". Your call sign is "Range XX" (name of range, training area or facility unit is occupying).
3. The primary RCF Fire Desk Net Control frequencies are: ELMR talk group "RC Safety" (ground) and 323.7 AM UHF (air).
4. The secondary RCF Fire Desk Net Control is telephone, numbers: 703-784-5321 or 5322.
5. OIC/RSO will monitor the RCF primary and secondary Safety Nets at all times. Instant communication is required.
6. Any unit with organic ELMR radios will have their ELMR radios programmed with the "RC Safety" talk group and use those radios as their primary means of communication within the RTA.
7. Units without organic ELMR assets will be issued ELMR radios from RMB upon check-in.
8. Approved Non-ELMR radios are only authorized for internal communication (ground).
9. If the RCF cannot reach a unit within the RTA via primary communication, the unit will be contacted via the secondary means of communication.
10. Upon loss of primary communication the OIC/RSO will initiate a "check fire"/cease training status and will contact the RCF via secondary communication. This communication will be maintained while primary communication is being restored. Units may only resume firing/training



once primary communication has been re-established and clearance is granted by the RCF.

**INJURY CLASSIFICATIONS:**

Injuries are classified into the following categories in order to aid in casualty evacuation from the RTA.

1. ROUTINE. Routine injuries are those injuries that are not threatening to life, limb or eyesight; and conditions or illnesses treatable by medication or procedures available at the base medical facilities.
2. PRIORITY. Priority injuries are those injuries that require immediate medical attention but are not threatening to life, limb, or eyesight if treated promptly.
3. URGENT. Urgent injuries are severe injuries that are threatening to life, limb, or eyesight and require immediate medical attention.
4. MASS CASUALTY. A mass casualty is a series of injuries with multiple priority and urgent medical patients.

**MEDICAL EVACUATION (MEDEVAC) PROCEDURES:**

1. Injury occurs.
2. Range immediately cease-fires.
3. Medical support evaluates/treats injured personnel.
4. Range OIC/RSO notifies the RCF of the injury, is the victim conscious/unconscious and what type of MEDEVAC transportation is requested (ground/air).
5. The OIC/RSO must maintain constant radio contact with Range Control and awaits further instructions.

\*Minor injuries and illnesses not requiring medical services need not be reported to the RCF but should be reported in unit training logs.



Range Control Officer

Date: 4-30-21